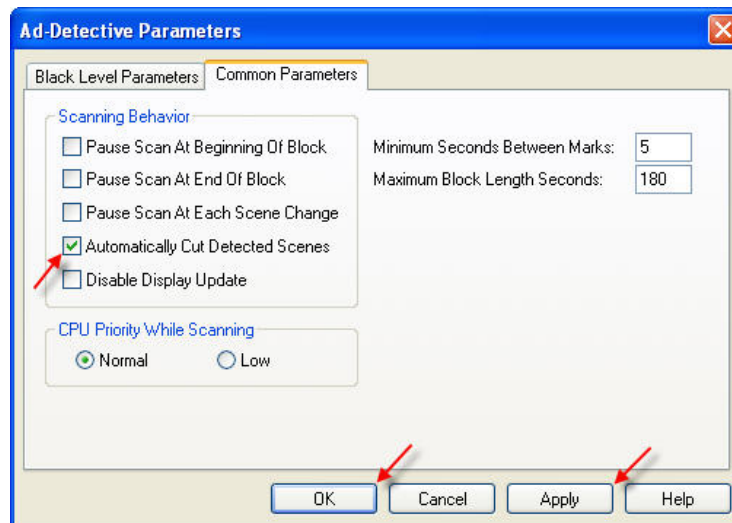

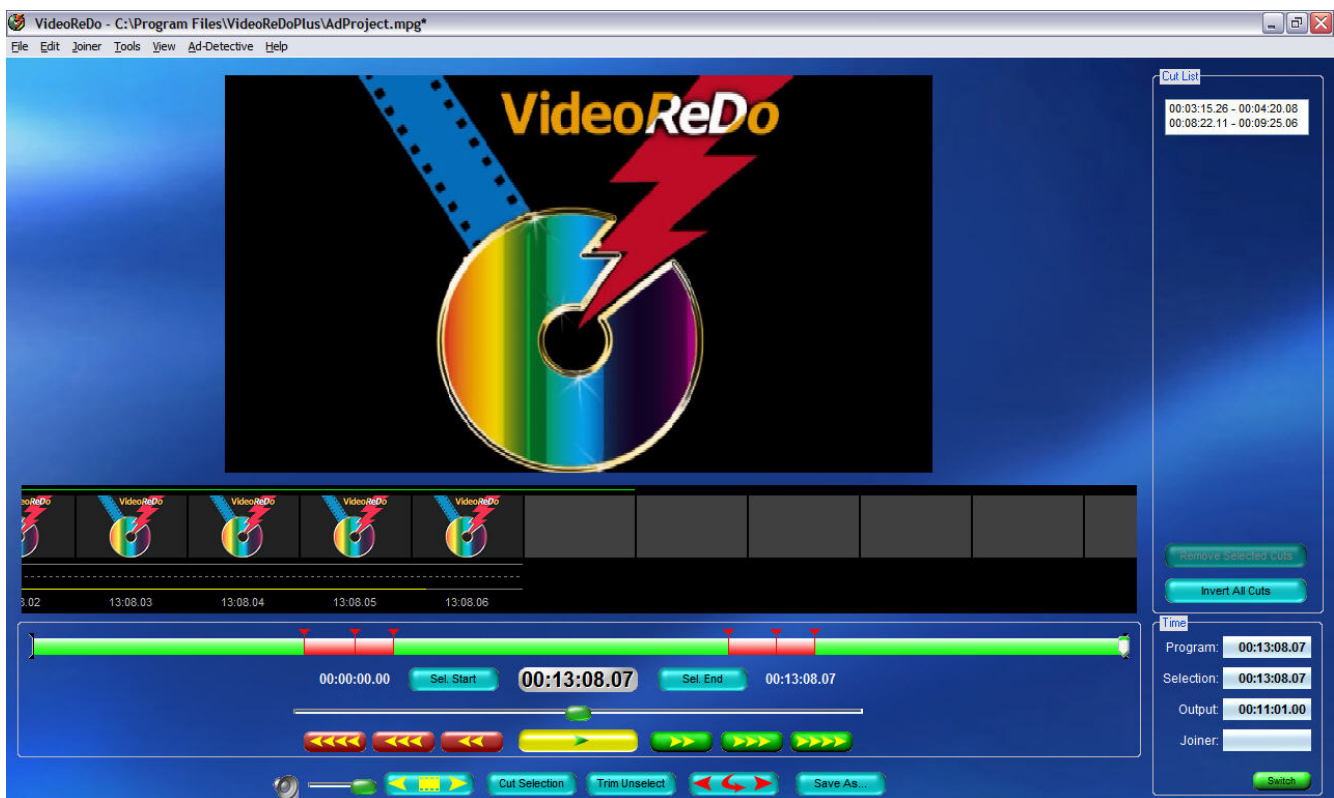


How to use Ad-Detective Automatically

1. Start VideoReDo and load a file.
2. Click on the menu: Ad-Detective>Set Ad-Detective Parameters and click on the Common Parameters tab.



3. Select “Automatically Cut Detected Scenes” and deselect the other options in the scanning behavior section. Press the Apply and OK buttons to accept your changes and return to the editor window.
4. Press the  button or Ctrl+A keys. Ad-Detective will begin scanning and stop when it reaches the end of the file placing marks on the timeline and automatically marking commercial segments for deletion.




5. When you are finished, your timeline will look like this.

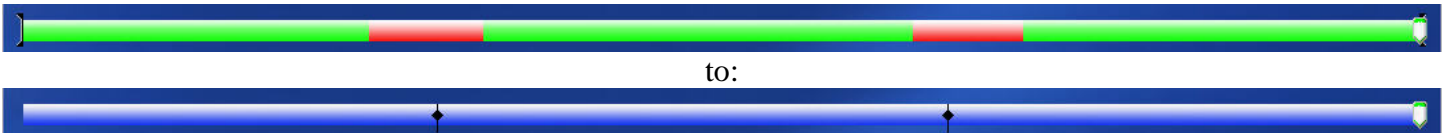




6. Press the Ctrl+Shift+A keys simultaneously to clear all scene markers if you wish.




Previewing Your Cuts

1. You can select Preview Mode to view your output file before saving. Press the  button. The timeline display will change from:



2. You can preview your video and the cuts by navigating the same as in edit mode or by pressing the  or  buttons to jump to the cut points. You can also set a Preview lead-in time so as you jump to the cuts, VideoReDo will display them with your selected pre-roll time. This is available under the Tools>Options>General Parameters menu.

Saving Your Edited File

Press the  button to save your edited, commercial-free video. The file will be saved in a few minutes without reencoding the entire video. Only what you viewed in preview mode (or the green segments of the edit mode timeline) will be saved.